

3PC HIGH PLATFORM BALL VALVE



STANDARD SPECIFICATION

1. Design and manufacture: GB/T 12237-2007
2. Body thickness: GB/T 12221
3. NPT screw Conn.: ASME B1.20.1
G screw conn.: GB/T 12716
RC screw conn.: GB/T 7306.2
4. Socket weld: ASME B16.11
5. Butt Weld: ASME B16.25, ASME B36.10M
6. inspection and test: GB/13927-1992

DESIGN SPECIALTY

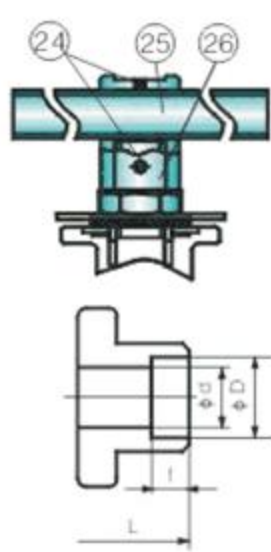
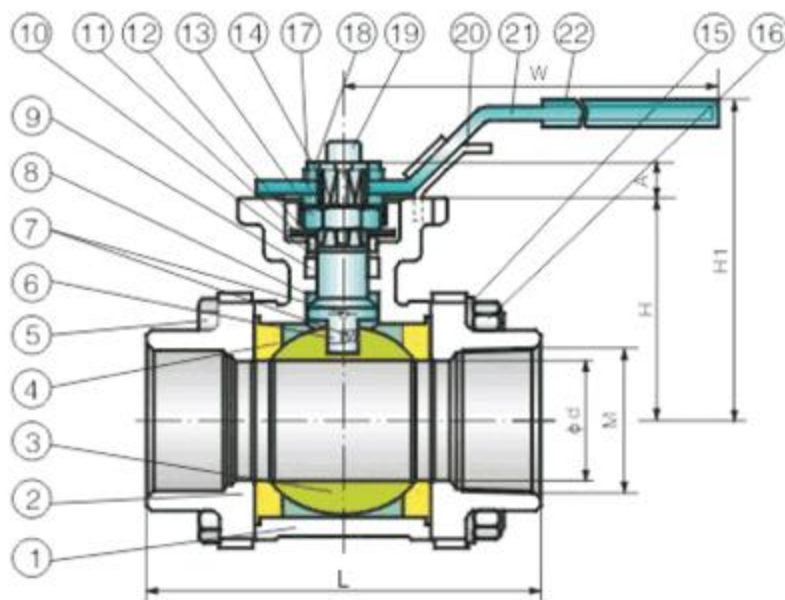
1. Lever have locked device, prevent misuse, more safety and reliable.
2. Anti-blow out stem
3. Easygoing operation
4. Acc. To API607 Fire safe design.
5. Both Full Bore and Reduced Bore are available
6. Anti-static device between stem and ball
7. End conn.: NPT Socket Weld BW(Extended body available)

SPECIAL VALVE PERFORMANCE CAPABILITIES

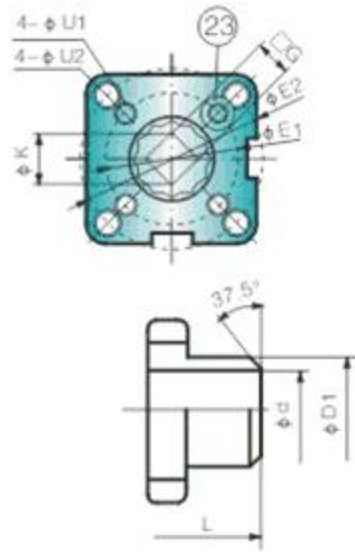
Can be used to clean water, waste water, air, steam, food, pharmaceutical, chemical, oil, alkali and salt etc

MAIN PARTS AND MATERIALS

| No. | Part name | Material | | |
|-----|-----------------------|------------------------------|-----|---------|
| 1 | Body | CF8M | CF8 | WCB |
| 2 | Bonnet | CF8M | CF8 | WCB |
| 3 | Ball | 316 | 304 | |
| 4 | Seat | PTFE/RP TFE/PPL/Carbon fiber | | |
| 5 | Nuts | A193 B8 | | A193 B7 |
| 6 | Stem | 316 | 304 | 2Cr13 |
| 7 | Anti-static | 304 | | |
| 8 | Thrust gasket | PTFE/Carbon fiber | | |
| 9 | Packing | PTFE | | |
| 10 | Packing protector | 304 | | |
| 11 | Packing bushing | 304 | | |
| 12 | Belleville spring | 304 | | |
| 13 | Nuts | 304 | | |
| 14 | Soft gasket | 304 | | |
| 15 | Bolts and nut | 304 | | |
| 16 | Lever nuts | 304 | | |
| 17 | Retainer | 304 | | |
| 18 | Lever | 304 | | |
| 19 | Loose resistant cover | 304 | | |
| 20 | Lever glove | Plastic | | |
| 21 | Positioning bolts | 304 | | |
| 22 | Locked screw | 304 | | |
| 23 | Lever | 304 | | |
| 24 | Wrench | CF8 | | |



Socket weld (SW) connection



Butt weld ends (BW) connection

ORDERING CODE

DP - 3P2W - 304 - 1/2

3 Pieces 304: SS 304
2 Way 316: SS 316
Ball Valve Port Size (NPS)

1000 PSI MAIN CONNECTION SIZE

| NPS(in) | Φd | f | L | H | H1 | A | W | ΦE1 | ΦE2 | G | ΦU1 | ΦU2 | D | D1 | M |
|---------|-----|----|-----|------|-----|------|-----|-----|-----|----|-----|-----|-------|-----|-----------------------|
| 1/2" | 15 | 10 | 72 | 40 | 76 | 8 | 145 | 36 | 42 | 9 | 6 | 6 | 21.8 | 22 | NPT BSP G RC |
| 3/4" | 20 | 13 | 82 | 46 | 82 | 8 | 145 | 36 | 42 | 9 | 6 | 6 | 27.2 | 28 | |
| 1" | 25 | 13 | 90 | 57 | 100 | 11.5 | 165 | 42 | 50 | 11 | 6 | 7 | 34 | 34 | |
| 1 1/4" | 32 | 13 | 112 | 64 | 95 | 12.5 | 165 | 42 | 50 | 11 | 6 | 7 | 42.6 | 43 | |
| 1 1/2" | 38 | 13 | 120 | 71 | 118 | 16 | 200 | 50 | 70 | 14 | 7 | 9 | 48.7 | 50 | |
| 2" | 50 | 16 | 145 | 81.5 | 129 | 20 | 200 | 50 | 70 | 14 | 7 | 9 | 61.2 | 61 | |
| 2 1/2" | 65 | 16 | 185 | 95 | 152 | 20 | 250 | 70 | 102 | 17 | 9 | 11 | 74 | 76 | |
| 3" | 80 | 16 | 208 | 109 | 159 | 20 | 265 | 70 | 102 | 17 | 9 | 11 | 90 | 92 | |
| 4" | 100 | 19 | 268 | 142 | 205 | 22 | 400 | / | 102 | 22 | / | 11 | 115.6 | 115 | |