

## 4A100 Series Pneumatic Control Valve

Working Pressure : 0.15 ~ 0.8MPa



### Ordering Code

4A	1	10	-	06
	Series Code 100 Series	Coil and Places 210: Single Solenoid (200 Series) 220: Double Solenoid (200 Series) 310: Single Solenoid (300 Series) 320: Double Solenoid (300 Series)		Port size M5: M5 Å0.8 06: 1/8"
<b>Specification Code</b> Five-way Solenoid Valve 4A: Two (Three)-position Five-way Pneumatic Control Valve 3A: Two-position Three-way Pneumatic Control Valve				

## 4A200 Series Pneumatic Control Valve

Working Pressure : 0.15 ~ 0.8MPa

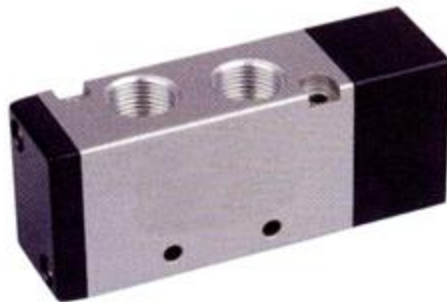


### Ordering Code

4A	2	10	-	06
	Series Code 200 Series	Coil and Places 30C: 5/3 Closed Center 30E: 5/3 Exhaust Center 30P: 5/3 Pressure Center 10: 5/2 Single Coil 20: 5/2 Double Coil		Port size 06: 1/8" 08: 1/4"
<b>Specification Code</b> 4A: Two (Three)-position Five-way Pneumatic Control Valve 3A: Two-position Three-way Pneumatic Control Valve				

## 4A300 Series Pneumatic Control Valve

Working Pressure : 0.15 ~ 0.8MPa



### Ordering Code

4A	3	10	-	10
	Series Code 300 Series	Coil and Places 30C: 5/3 Closed Center 30E: 5/3 Exhaust Center 30P: 5/3 Pressure Center 10: 5/2 Single Coil 20: 5/2 Double Coil		Port size 08: 1/4" 10: 3/8"
<b>Specification Code</b> 4A: Two (Three)-position Five-way Pneumatic Control Valve 3A: Two-position Three-way Pneumatic Control Valve				

## 4A400 Series Pneumatic Control Valve

Working Pressure : 0.15 ~ 0.8MPa



### Ordering Code

4A	4	10	-	15
	Series Code 400 Series	Coil and Places 30C: 5/3 Closed Center 30E: 5/3 Exhaust Center 30P: 5/3 Pressure Center 10: 5/2 Single Coil 20: 5/2 Double Coil		Port size 15: 1/2"
<b>Specification Code</b> 4A: Two (Three)-position Five-way Pneumatic Control Valve 3A: Two-position Three-way Pneumatic Control Valve				

Pneumatic Valves